

# *An ontology to support non-invasive diagnosis of heritage metals*

Alessio De Santo, Yann Vonlanthen, Antoine Rosselet,  
Christian Degrigny and Cédric Gaspoz

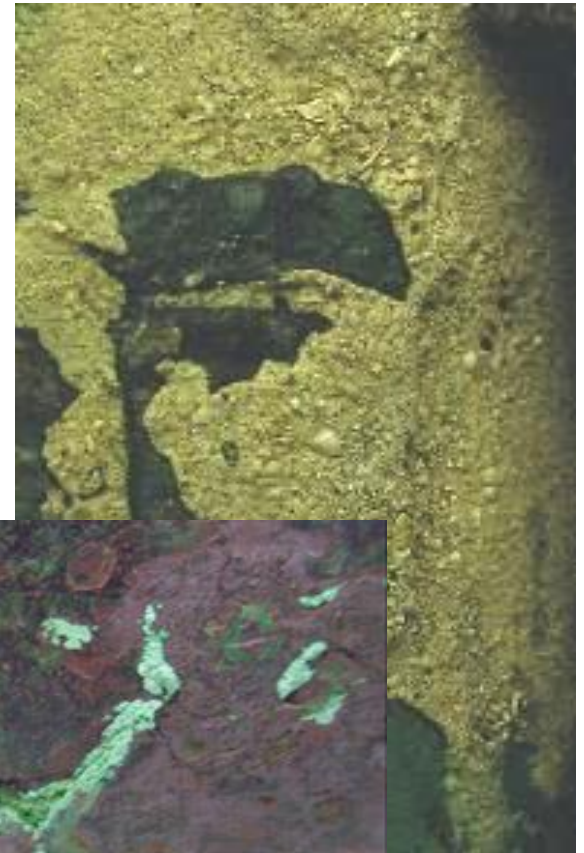
Information Systems and Management Institute,  
HES-SO // University of Applied Sciences of Western Switzerland,  
HEG Arc, Neuchâtel, Switzerland

{alessio.desanto, yann.vonlanthen, antoine.rosselet, christian.degrigny, cedric.gaspoz}@he-arc.ch

# *Summary*

- Context
- Building an ontology
- Utilisation
- Evaluation and results
- Conclusion

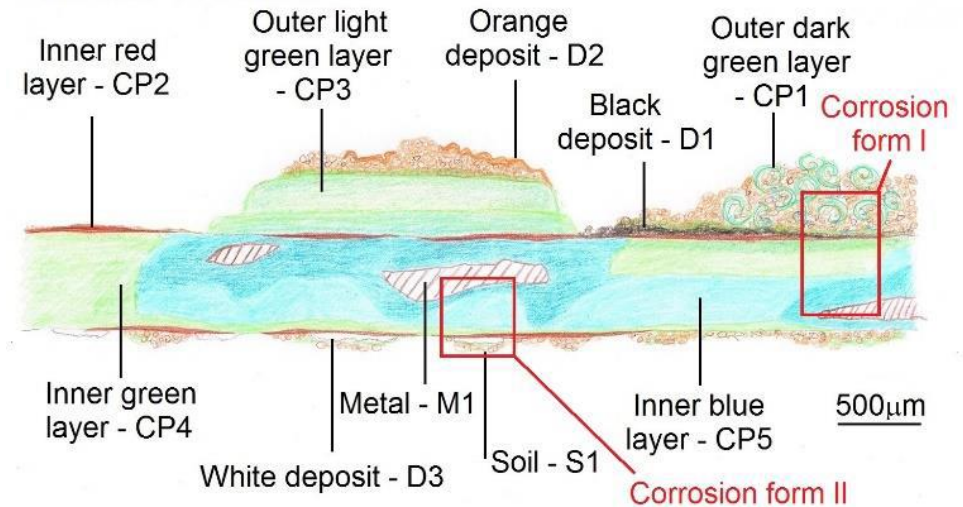
# Context



# Context



## Outside of situla



## Inside of situla

Understanding the forms of corrosion to choose an appropriate conservation protocol

# Context



Home /

Strata : 656c5bc0-25be-11e6-a742-000c29148083\_Strata4

Nature family : Metal

Morphology

Texture

Microstructure

Composition

Interfaces

Shape

layer/film/coating

Thickness

medium

Direction

longitudinal

Brightness

metallic

Magnetism

non magnetic

Width

medium

Continuity

continuous

Colour

pink

Opacity

opaque

+ Add a stratum

Save

Find similar

Export to PNG



CP1



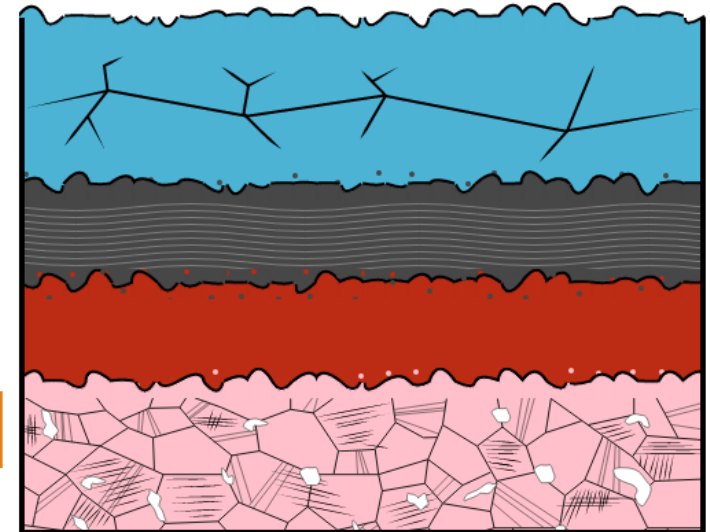
CP2



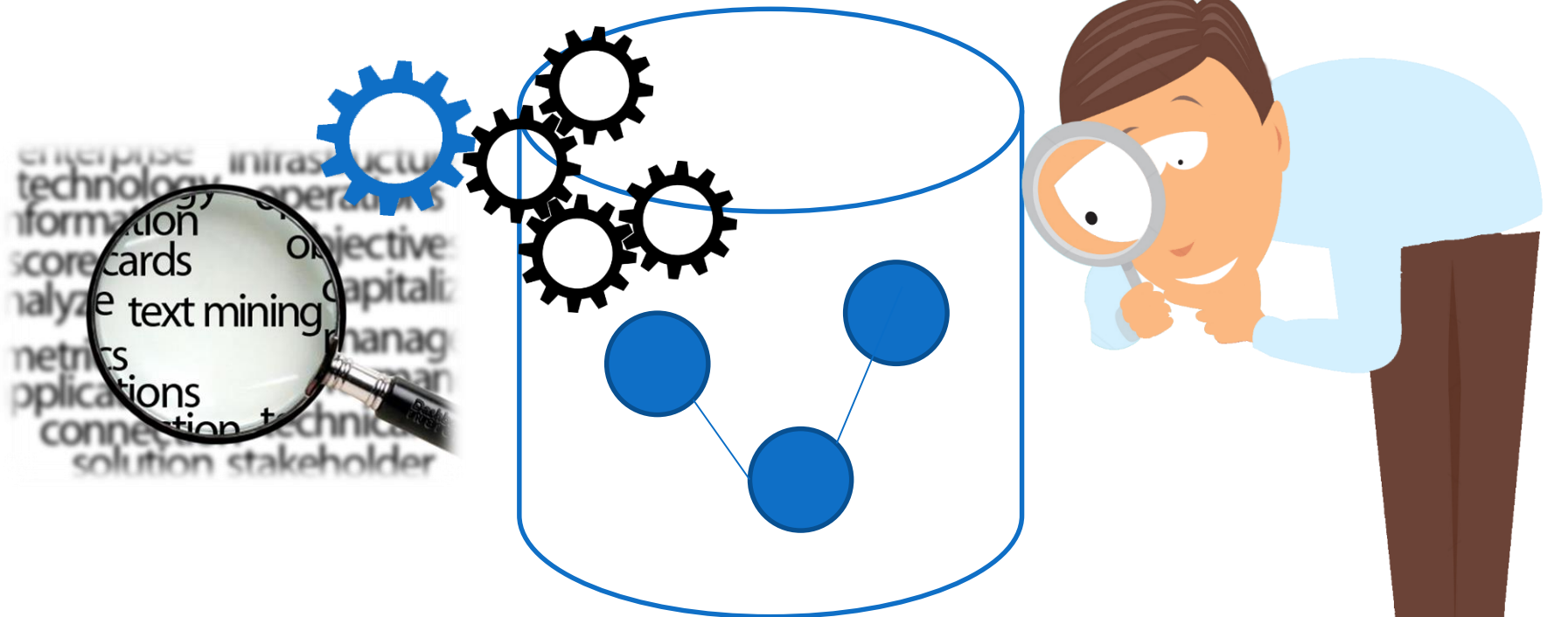
CP3



M1



# Building an ontology



# Utilisation

## SEARCH

Keywords:

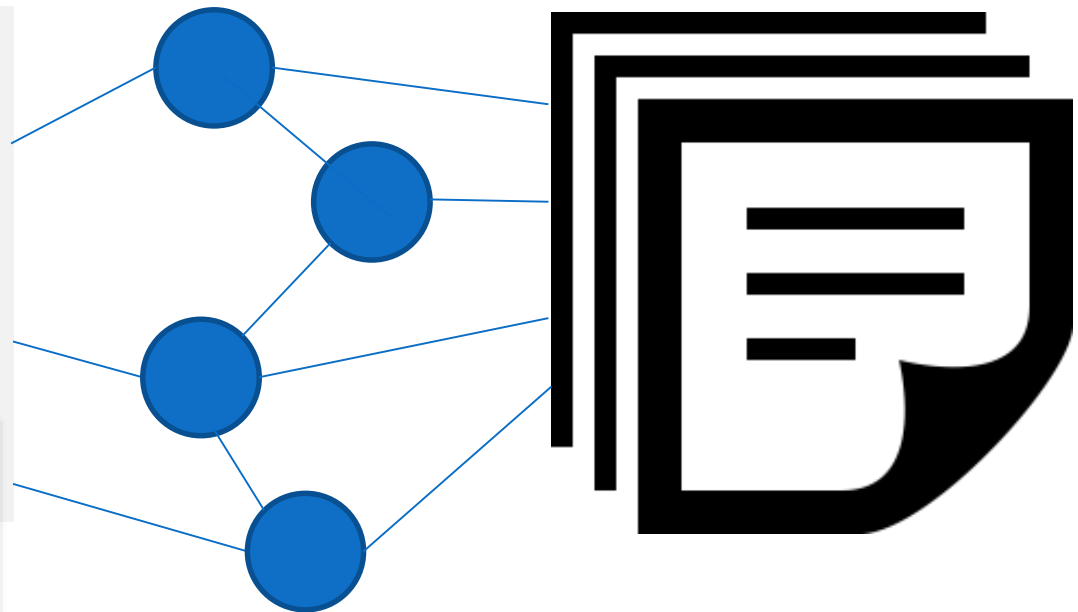
Unif|

Uniform - intergranular

Uniform - pitting

Uniform - selective

Uniform - transgranular



# *Evaluation and results*

**53%** of the ontology content appeared at least once in the articles

**16%** of the ontology content were found in all articles

**71%** of the words with the highest frequency among the text corpuses were present in the ontology



# Conclusion

- Identification of the main underlying concepts, attributes and relations of the conservation-restoration field of study.
- The generated ontology was tested for completeness and for its ability to make relevant inferences.
- Opening the way to the implementation of the ontology as a diagnosis tool.

*Thank you for your attention...*